

CREDIT OPINION

19 July 2021

Update

✓ Rate this Research

RATINGS

Interconexión Eléctrica S.A. E.S.P.

Domicile	Colombia
Long Term Rating	Baa2
Type	LT Issuer Rating - Fgn Curr
Outlook	Stable

Please see the ratings section at the end of this report for more information. The ratings and outlook shown reflect information as of the publication date.

Contacts

Fernando Flores +52.55.1555.5317
Associate Analyst
marcelo.flores@moodys.com

Cristiane Spercel +55.11.3043.7333
VP/SCO Manager
cristiane.spercel@moodys.com

Aneliza Crnugelj +55.11.3043.6063
AVP-Analyst
aneliza.crnugelj@moodys.com

CLIENT SERVICES

Americas 1-212-553-1653
Asia Pacific 852-3551-3077
Japan 81-3-5408-4100
EMEA 44-20-7772-5454

Interconexión Eléctrica S.A. E.S.P.

Annual update to credit analysis

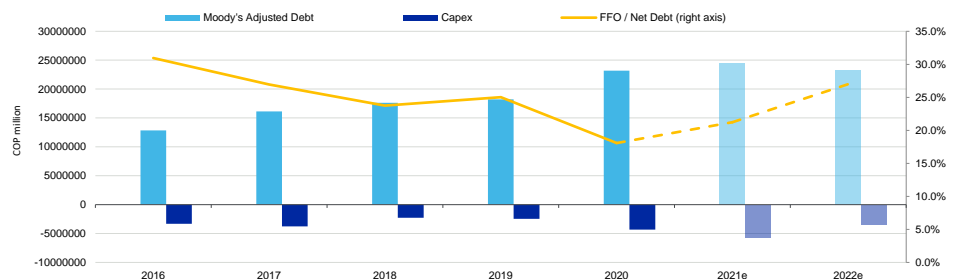
Summary

Interconexión Eléctrica S.A. E.S.P.'s (ISA, Baa2 stable) credit profile reflects its position as one of the largest transmission companies in Latin America and its diversified operations through its subsidiaries located in Colombia (Baa2 negative), Brazil (Ba2 stable), Chile (A1 negative) and Peru (A3 negative). It reflects the importance of the Colombian operations, responsible for around 25% of its overall EBITDA generation, and the fact that the underlying credit quality of most of the foreign subsidiaries is relatively weaker than that of the operations from Colombia, either because of leverage or sovereign-related risks. The credit view further reflects its ownership structure and links with the Government of Colombia (Baa2 stable) as its majority shareholder.

The company continues to execute an important investment cycle, viewed as more aggressive than historical levels. We expect consolidated debt to peak at around COP22-23 trillion in the next 12-18 months from an average balance of COP16 trillion in 2015-20. On the other hand, the cash flow generation is likely to increase as a consequence of new operations, with funds from operations (FFO)-to-net debt expected to remain around 20%-25% in the period.

Exhibit 1

Key credit metrics to remain within historical thresholds



Source: Moody's Financial Metrics™, Moody's Investors Service

Credit strengths

- » Diversified geographic profile with majority of cash flows derived from the very stable transmission business
- » Relative lowly leveraged capital structure
- » Strong market share in strategic sectors essential to the economies where it operates

Credit challenges

- » Substantial capital spending program, exposing the company to delays and cost overrun risks, typical to projects under construction
- » Potential uncertainty on the remuneration for Colombian and Brazilian transmission lines
- » Appetite for growth and M&A activity that could pressure leverage

Rating outlook

The stable outlook reflects the expectation that the company will prudently manage its capital investment program such that interest coverage and FFO/net debt remain within 4.5x to 5.5x and 20% to 30%, respectively.

Factors that could lead to an upgrade

Upward pressure on ISA's rating could derive from continued diversification or higher representation of operations in higher rated countries carrying commensurate leverage profiles. A slower pace of capital investment that allows deleveraging such that interest coverage and FFO/net debt exceed 6.0x and 30%, respectively, may also lead to positive rating action.

Factors that could lead to a downgrade

ISA's issuer rating could be downgraded upon downgrades of the sovereign ratings of the countries in which ISA holds substantial operations, in particular Brazil, Peru, and Colombia. A perception of lower support from the shareholder, business expansion or sustainable deterioration in the liquidity profile could all exert downward pressure on ISA's ratings. Negative rating pressure could also result from a more aggressive capital spending plan, or if the company faces any significant delays or cost overruns that significantly postpone or dent the recovery of its key credit metrics while maintaining dividend distributions. Quantitatively, ISA's rating could be downgraded should its:

- » FFO/net debt decrease below 15%
- » interest coverage ratio fall below 3.0x
- » retained cash flow/net debt fall below 4%

Key indicators

Exhibit 2

Interconexión Eléctrica S.A. E.S.P. (consolidated)

COP millions	2016	2017	2018	2019	2020
FFO Interest Coverage	5.0x	5.6x	5.3x	5.1x	4.1x
Net Debt / Fixed Assets	39%	45%	48%	46%	51%
FFO / Net Debt	31.0%	27.0%	23.7%	25.0%	18.1%
RCF / Net Debt	27.3%	21.1%	12.2%	17.6%	11.6%

Source: Moody's Financial Metrics™, Moody's Investors Service

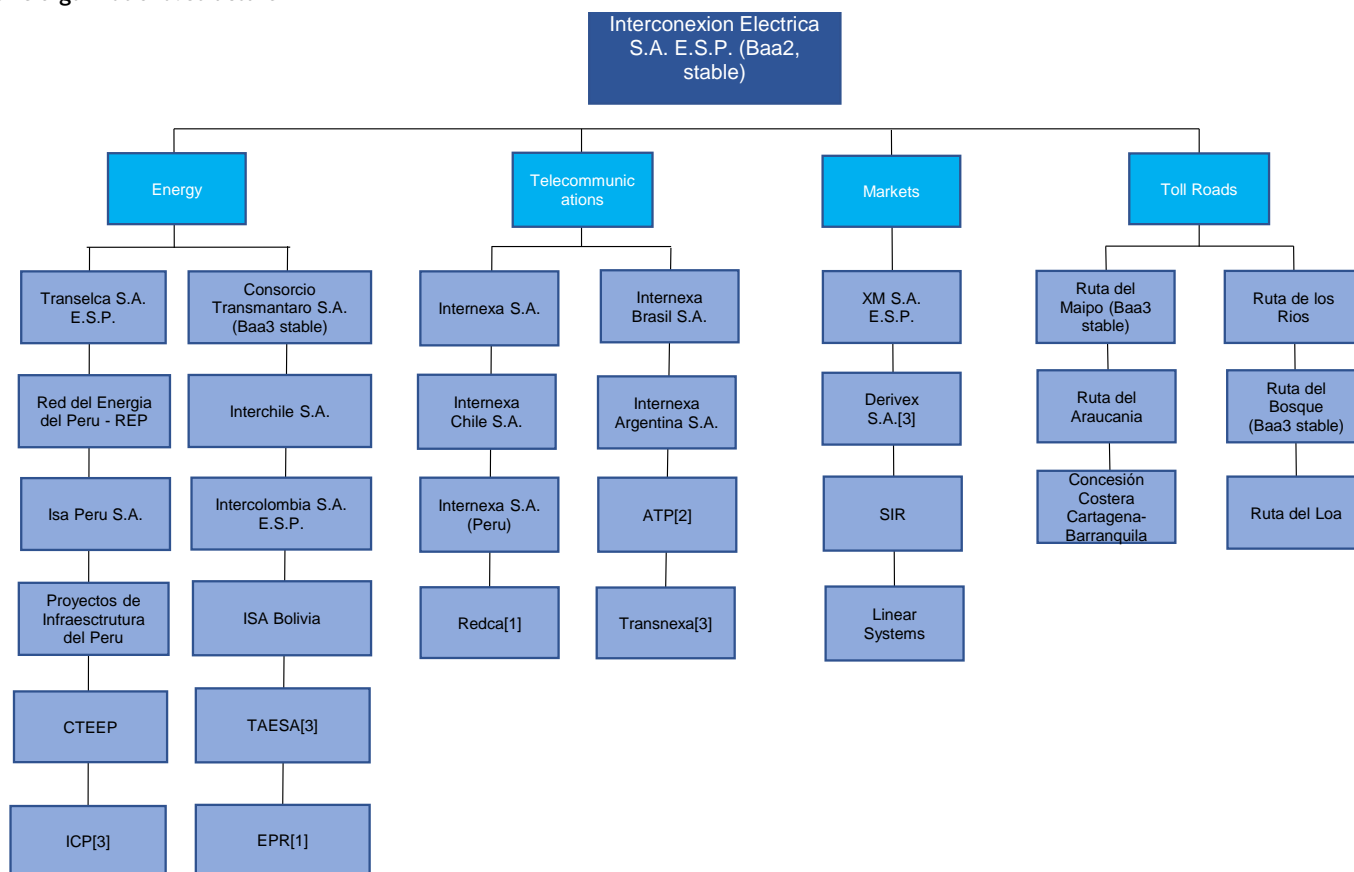
This publication does not announce a credit rating action. For any credit ratings referenced in this publication, please see the ratings tab on the issuer/entity page on www.moody's.com for the most updated credit rating action information and rating history.

Profile

Headquartered in Medellin, Interconexión Eléctrica S.A. E.S.P. (ISA) is an operating holding company with businesses in the electricity transmission, toll roads, telecommunications, and systems management sectors. The company is headquartered in Colombia, and holds direct and indirect ownership stakes in a portfolio of subsidiaries located in Colombia, Brazil, Chile and Peru.

Exhibit 3

ISA's organizational structure



[1] Investments in Financial Instruments: EPR y Redca

[2] Investments in Associates or with significant influence: ATP

[3] Investments with Joint Control: ICP, Taesa, Transnexa and Derivex

Intervial Chile incorporated and capitalized ISA Inversiones Costera Chile, due to the Sales Purchase Agreement of the shares of the Concesión Costera Cartagena – Barranquilla (pending approval)

Source: ISA

The Colombian government is ISA's majority shareholder (51.41% ownership stake), followed by [Empresas Públicas de Medellín E.S.P.](#) (8.82%, Baa3 negative). The balance of 39.77% is publicly held, including institutional investors (25.69%). Similar to other publicly controlled entities, ISA is subject to fiscal control under the General National Accounting Authority and requires approval from the Colombian Ministry of Finance (Ministerio de Hacienda y Crédito Público) to incur new debt or provide guarantees.

Detailed credit considerations

Potential change in ownership structure to impact our support assumptions

ISA's rating reflects the application of our Joint-Default-Analysis (JDA) framework for government related issuers (GRI). Our GRI methodology considers the following four input factors: (1) a moderate-level probability of extraordinary support from the sovereign

should ISA face financial distress, (2) our estimate of a very high level of dependence between the company and the sovereign, (3) the sovereign rating of Colombia of Baa2 negative, and (4) ISA's intrinsic credit quality as measured by its baseline credit assessment (bca) of baa2.

On 27 January 2021, Ecopetrol S.A. (Ecopetrol, Baa3 stable) announced it made a formal bid to acquire the Government of Colombia's (Baa2 negative) 51.4% stake in Interconexión Eléctrica S.A. E.S.P. (ISA, Baa2 stable). Should the transaction close, the lower credit quality of the new controlling shareholder and the lower indirect ownership stake by the Government could imply in a lower assumption for extraordinary support under our JDA. Nonetheless, the credit impact on ISA's rating would depend of the long-term business strategy and new corporate governance structure of the new controlling shareholder.

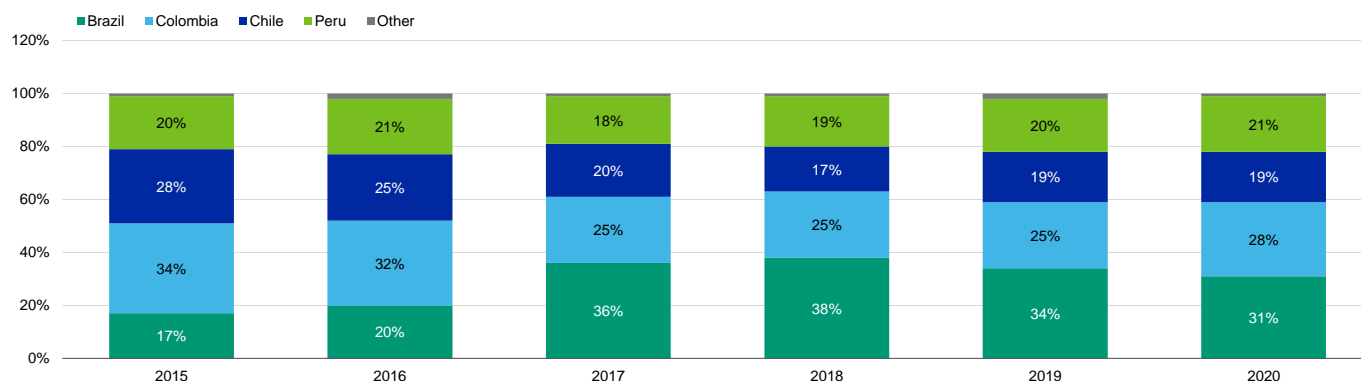
Geographic diversification is credit positive; Colombian operations carry higher credit quality while Brazil weighs on the consolidated view

ISA's credit profile benefits from the geographic diversification of operating in four different countries with different regulatory regimes. Over the course of the last five years, as a result of its large investment cycle, the operations in Brazil have increased in overall representation, with the EBITDA contribution of Colombian operations declining from 34% in 2015 to 25% in 2020. We expect the share of Colombian operations to remain relatively stable going forward. We see the company's credit quality somewhat linked to the sovereign-related risks of the countries where it operates.

The ramping up of transmission operations in Brazil and Chile has also decreased the overall EBITDA contribution from the toll road business from 28% in 2015 to about 20% in 2020. The toll road business, has historically been concentrated in Chile, with recent expansion in Colombia's fourth generation toll road concessions program (4G).

Exhibit 4

Brazil represented an average of 34% of EBITDA in the last three years



[1] EBITDA is adjusted for non-recurring items such as the RSBE in Brazil
Source: ISA

The diversification is generally positive, but the overall view is that the Colombian operations carry the highest credit quality. The credit quality of the Brazilian operations, through Companhia de Transmissão de Energia Elétrica Paulista S.A. (ISA CTEEP) is viewed as somewhat linked to the sovereign rating of Brazil. The credit profile of Peruvian transmission company [Consortio Transmantaro S.A.](#) (Baa3 stable) is constrained by leverage, as are the Chilean toll roads [Ruta del Maipo](#) (Baa3 stable) and [Ruta del Bosque](#) (Baa3 stable).

International diversification further supports long-term growth

ISA's 2030 corporate strategy strives to expand the group's footprint outside Colombia, in countries and regions with constructive regulatory frameworks. It also focuses on improving profitability and achieving efficiencies in its core businesses.

The strategy also includes procurement of synergies, given the group's significant investment programs in Colombia, Brazil, Peru and Chile, as well as pursuing investment opportunities via partnerships (particularly if ISA is the controlling party). In December 2018, the company announced an investment agreement with Construcciones El Cóndor S.A. to enter the business of toll road concessions in the Colombian and Peruvian markets, of which ISA will control at least 51%.

Large scale and leading domestic footprint underpin a solid business profile in Colombia

ISA is the leading transmission company in Colombia, responsible for approximately 70% of the overall transmission capacity in the country. The company's business profile is enhanced by the very high reliability of its infrastructure, presenting availability ratios of 99,8%, which is highly positive for the availability-based revenue profile of its contracts. The company's assets are held in perpetuity, and tariffs are subject to periodic reviews.

The portfolio of Colombian transmission lines is managed through a contractual management agreement with the company's subsidiary Intercolombia. With the objective of separating ISA's Colombian transmission operations from other businesses, the actual management of the transmission assets is undertaken by its own subsidiary and the assets remain the property of ISA as an operating holding company. The contractual operating and maintenance agreement, which has the stamp of the system grid's operator, XM S.A. E.S.P (another ISA subsidiary), establishes a cost plus mechanism, where Intercolombia holds an operating margin over incurred costs, with the remaining cash flow allocated to ISA. Independent of the fact that Intercolombia holds no financial debt, the contractual arrangement mitigates any structural subordination risks.

Update to regulatory review processes

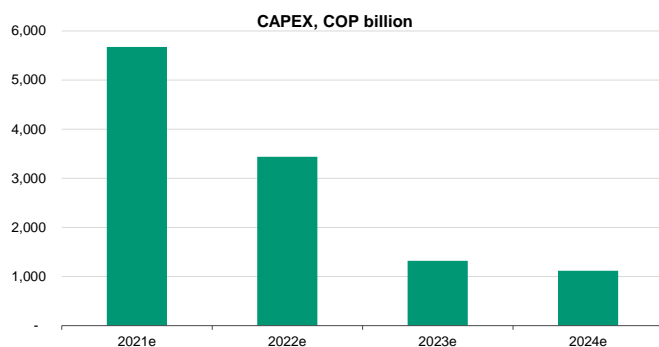
We continue to view the regulatory framework and environment in Colombia as overall credit positive. However, there has been a substantial delay in the tariff review process by the regulator (Comisión de Regulación de Energía y Gas - CREG), in particular because of the potential for methodological changes. Also in Brazil, in April 2021, the regulator ANEEL approved the reprofiling of RBSE ("Basic Network Existing System") payments, which are related to the indemnification of the transmission companies with contracts renewed in 2013. ANEEL's decision aimed to reduce tariff pressures arising from the effects of the coronavirus pandemic, and the indemnification payments will now occur in eight years (instead of five) and will be lower in the 2021/2022 and 2022/2023 cycles. However, the net present value of the operation will be maintained given the higher WACC.

Expansion program to strain free cash flow generation in the short term

The company is undergoing a substantial capital investment program, sized at around COP9 trillion in the next 12-18 month. Approximately 75%-80% of the investments are directed to energy transmission while approximately 25-20% are in the toll road business. Most of the investment is domiciled in Brazil (33%), followed by Chile (19%), Colombia (27%) and Peru (21%). As a result of the capital spending program, we expect the company's free cash flow generation to remain negative.

Exhibit 5

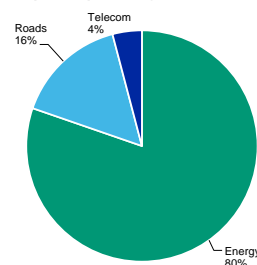
Capital spending to strain free cash flow in the medium term...



Source: ISA, Moody's Investors Service

Exhibit 6

but focused on business with predictable cash flows Breakdown by business: capital spending for 2021-2025



Source: ISA

Key credit metrics to remain relatively stable

The credit view recognizes the increase in debt as the company executes its investment program, but also the expectation that revenue and cash flow will increase as the projects under construction begin operations. In addition, the continued devaluation of the Latin American currencies compared to the US dollar also weigh on the debt as 38% of the consolidated debt is USD denominated.

As of March 2021, ISA reported total consolidated debt of COP24 trillion, compared to 22.7 trillion in December 2020. The actual increase in debt represented only COP300 billion of the variation, with the rest being linked to currency devaluation. Nevertheless, we

also consider in our analysis that about 20% of the Colombian revenues and 15% of the Chilean revenues are denominated in USD, which should partially offset the currency devaluation impact on debt and interest.

We expect FFO/net debt to remain between 20% and 25% over the next 12-18 months as the newer operations continue to ramp up at the same time interest coverage averages 5.0x. The significant expansion plan will continue to strain leverage in the period and new investments and acquisitions could weaken the company's credit quality.

ESG considerations

Moody's takes into account the impact of environmental, social and governance factors when assessing issuers' economic and financial strength.

Environmental considerations

Regulated electric networks, which do not own energy generation assets, such as ISA, carry low environmental risks. New project investments bring completion execution risks, and environmental licenses can eventually lead to delays in project completion or cost overruns. Nonetheless, ISA has been able to manage these appropriately.

Social considerations

The rapid and widening spread of the coronavirus outbreak, deteriorating global economic outlook, falling oil prices, and asset price declines are creating a severe and extensive credit shock across many sectors, regions and markets. The combined credit effects of these developments are unprecedented. Moody's regards the coronavirus outbreak as a social risk under our ESG framework, given the substantial implications for public health and safety. We do consider however that ISA's cash flows carry low exposure to coronavirus-related risks in its transmission business given the essentiality of the service and the availability-based revenue stream. While the toll road business carries volume risk, the company benefits from ample liquidity that will lead them to manage through the negative cycle.

Governance considerations

ISA has shown a good track record of maintaining a conservative financial policy, presenting leverage metrics that are very strong for companies operating in the transmission business. The company's senior management has extensive sector experience. ISA is listed on the Colombia Stock Exchange and has almost 40% of its shares publicly held, with 78% of its board represented by independent members.

Liquidity analysis

ISA carries an adequate liquidity profile. As of March 2020, ISA reported a consolidated cash position of COP3.4 trillion against COP1.5 trillion of debt due in the next 12 months. At the holding level, the company reported cash on hand of COP618 billion against COP4.7 trillion of short-term maturities. On a consolidated basis, ISA's maturity profile is manageable, with an average tenor of around 8 years.

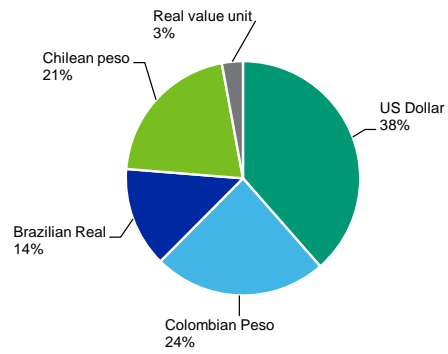
Structural considerations

Management's foreign-exchange rate risk policy strives to minimize the exposure to currency volatility by trying to incur debt in proportion to the consolidated cash flow stream. The mismatch exists as the underlying subsidiaries carry different leverage profiles, largely as a function of as to where they are within their capital investment cycle.

As of December 2020, around 38% of ISA's consolidated debt was denominated in US dollars - largely backed by the Peruvian transmission concessions, which currently are more leveraged than the consolidated profile. On the other hand, Brazilian operations are less leveraged. Consequently, debt incurred in BRL represents 16% of the total, while EBITDA derived from Brazil represents a 31% share of total. On a consolidated basis, ISA does not have material financial hedges.

Exhibit 7

Share of consolidated debt by currency as of December, 2020



Source: ISA

Rating methodology and scorecard factors

We evaluate ISA's BCA mainly relative to our Regulated Electric and Gas Networks rating methodology that was published in March 2017. As depicted in the grid below, the current and projected scorecard indicated outcomes are Baa1, one notch above the currently assigned BCA and issuer rating. The one notch differential reflects sovereign-related risks, an element treated outside the scorecard.

Exhibit 8

Rating factors table

Interconexión eléctrica S.A. E.S.P. (consolidated)

Regulated Electric and Gas Networks Industry Grid [1][2]	Current FY 12/31/2020		Moody's 12-18 Month Forward View as of 6/17/2021 [3]	
Factor 1: Regulatory Environment and Asset Ownership (40%)	Measure	Score	Measure	Score
a) Stability and Predictability of Regulatory Regime	Baa	Baa	Baa	Baa
b) Asset Ownership Control	Aa	Aa	Aa	Aa
c) Cost and Investment Recovery (Ability and Timelines)	Baa	Baa	Baa	Baa
d) Revenue Risk	Aa	Aa	Aa	Aa
Factor 2: Scale and Complexity of Capital Program (10%)				
a) Scale and Complexity of Capital Program	Ba	Ba	Ba	Ba
Factor 3: Financial Policy (10%)				
a) Financial Policy	Baa	Baa	Baa	Baa
Factor 4: Leverage and Coverage (40%)				
a) FFO Interest Coverage (3 Year Avg)	4.8x	A	5.0x	A
b) Net Debt / Fixed Assets (3 Year Avg) (or RAB)	48.1%	A	49.0%	A
c) FFO / Net Debt	22.0%	A	24.0%	A
d) RCF / Net Debt (3 Year Avg)	13.6%	Baa	16%	A
Indicated Outcome				
Scorecard indicated outcome Grid Factors 1-4		Baa1		Baa1
Rating Lift		-		
a) Scorecard Indicated Outcome		Baa1		Baa2
b) Actual Rating Assigned				Baa2
Government Related Issuer	Factor			
a) Baseline Credit Assessment	baa2			
b) Government Local Currency Rating	Baa2			
c) Default Dependence	Very High			
d) Support	Moderate			
e) Final Rating Outcome	Baa2			

[1] All ratios are based on 'Adjusted' Financial Data and Incorporate Moody's Global Standard Adjustments for Non-Financial Corporations

[2] As of 12/31/2020

[3] This represents Moody's forward view, not the view of the issuer, and unless noted in the text, does not incorporate significant acquisitions or divestitures

Source: Moody's Financial Metrics™

Recent Developments

Ruta del Maule, as a concessionary company under ISA-Intervial group, ended its concession contract on March 31, 2021 given that the total guaranteed revenue and the time lapse settled to cover the agreed additional projects with the MOP were fulfilled. The amount outstanding had been paid off on the second half of 2018, the contract reversion with the MOP was processed completely and now a closing legal, corporate and tributary procedure is ongoing, which is normal to any limited company in closing process.

Appendix

Exhibit 10

Moody's-adjusted debt [1]

COP million

	2016	2017	2018	2019	2020
As reported Debt	12,471,425	15,689,028	17,190,586	17,983,842	22,696,039
Pension Adjustment	218,682	225,041	222,473	227,847	488,508
Operating Lease Adjustment	172,516	203,760	226,036	-	-
Moody's Adjusted Debt	12,862,623	16,117,829	17,639,095	18,211,689	23,184,547

[1] All figures are based on 'Adjusted' financial data and incorporate Moody's Global Standard Adjustments for Non-Financial Corporations

Source: Moody's Financial Metrics™

Ratings

Exhibit 11

Category	Moody's Rating
INTERCONEXION ELECTRICA S.A. E.S.P.	
Outlook	Stable
Issuer Rating	Baa2
PARENT: COLOMBIA, GOVERNMENT OF	
Outlook	Negative
Issuer Rating	Baa2
Senior Unsecured	Baa2
ST Issuer Rating	P-2
ATP TOWER HOLDINGS, LLC	
Outlook	Stable
Corporate Family Rating	Ba3
Bkd Senior Secured	Ba3
RUTA DEL MAIPO SOCIEDAD CONCESIONARIA S.A.	
Outlook	Stable
Bkd Senior Secured	Baa3
RUTA DEL BOSQUE S.A.	
Outlook	Stable
Bkd Senior Secured -Dom Curr	Baa3

Source: Moody's Investors Service

© 2021 Moody's Corporation, Moody's Investors Service, Inc., Moody's Analytics, Inc. and/or their licensors and affiliates (collectively, "MOODY'S"). All rights reserved.

CREDIT RATINGS ISSUED BY MOODY'S CREDIT RATINGS AFFILIATES ARE THEIR CURRENT OPINIONS OF THE RELATIVE FUTURE CREDIT RISK OF ENTITIES, CREDIT COMMITMENTS, OR DEBT OR DEBT-LIKE SECURITIES, AND MATERIALS, PRODUCTS, SERVICES AND INFORMATION PUBLISHED BY MOODY'S (COLLECTIVELY, "PUBLICATIONS") MAY INCLUDE SUCH CURRENT OPINIONS. MOODY'S DEFINES CREDIT RISK AS THE RISK THAT AN ENTITY MAY NOT MEET ITS CONTRACTUAL FINANCIAL OBLIGATIONS AS THEY COME DUE AND ANY ESTIMATED FINANCIAL LOSS IN THE EVENT OF DEFAULT OR IMPAIRMENT. SEE APPLICABLE MOODY'S RATING SYMBOLS AND DEFINITIONS PUBLISHED BY MOODY'S ANALYTICS, INC. AND/OR ITS AFFILIATES. MOODY'S CREDIT RATINGS, ASSESSMENTS, OTHER OPINIONS AND PUBLICATIONS DO NOT ADDRESS ANY OTHER RISK, INCLUDING BUT NOT LIMITED TO: LIQUIDITY RISK, MARKET VALUE RISK, OR PRICE VOLATILITY. CREDIT RATINGS, NON-CREDIT ASSESSMENTS ("ASSESSMENTS"), AND OTHER OPINIONS INCLUDED IN MOODY'S PUBLICATIONS ARE NOT STATEMENTS OF CURRENT OR HISTORICAL FACT. MOODY'S PUBLICATIONS MAY ALSO INCLUDE QUANTITATIVE MODEL-BASED ESTIMATES OF CREDIT RISK AND RELATED OPINIONS OR COMMENTARY PUBLISHED BY MOODY'S ANALYTICS, INC. AND/OR ITS AFFILIATES. MOODY'S CREDIT RATINGS, ASSESSMENTS, OTHER OPINIONS AND PUBLICATIONS DO NOT CONSTITUTE OR PROVIDE INVESTMENT OR FINANCIAL ADVICE, AND MOODY'S CREDIT RATINGS, ASSESSMENTS, OTHER OPINIONS AND PUBLICATIONS ARE NOT AND DO NOT PROVIDE RECOMMENDATIONS TO PURCHASE, SELL, OR HOLD PARTICULAR SECURITIES. MOODY'S CREDIT RATINGS, ASSESSMENTS, OTHER OPINIONS AND PUBLICATIONS DO NOT COMMENT ON THE SUITABILITY OF AN INVESTMENT FOR ANY PARTICULAR INVESTOR. MOODY'S ISSUES ITS CREDIT RATINGS, ASSESSMENTS AND OTHER OPINIONS AND PUBLISHES ITS PUBLICATIONS WITH THE EXPECTATION AND UNDERSTANDING THAT EACH INVESTOR WILL, WITH DUE CARE, MAKE ITS OWN STUDY AND EVALUATION OF EACH SECURITY THAT IS UNDER CONSIDERATION FOR PURCHASE, HOLDING, OR SALE.

MOODY'S CREDIT RATINGS, ASSESSMENTS, OTHER OPINIONS, AND PUBLICATIONS ARE NOT INTENDED FOR USE BY RETAIL INVESTORS AND IT WOULD BE RECKLESS AND INAPPROPRIATE FOR RETAIL INVESTORS TO USE MOODY'S CREDIT RATINGS, ASSESSMENTS, OTHER OPINIONS OR PUBLICATIONS WHEN MAKING AN INVESTMENT DECISION. IF IN DOUBT YOU SHOULD CONTACT YOUR FINANCIAL OR OTHER PROFESSIONAL ADVISER.

ALL INFORMATION CONTAINED HEREIN IS PROTECTED BY LAW, INCLUDING BUT NOT LIMITED TO, COPYRIGHT LAW, AND NONE OF SUCH INFORMATION MAY BE COPIED OR OTHERWISE REPRODUCED, REPACKAGED, FURTHER TRANSMITTED, TRANSFERRED, DISSEMINATED, REDISTRIBUTED OR RESOLD, OR STORED FOR SUBSEQUENT USE FOR ANY SUCH PURPOSE, IN WHOLE OR IN PART, IN ANY FORM OR MANNER OR BY ANY MEANS WHATSOEVER, BY ANY PERSON WITHOUT MOODY'S PRIOR WRITTEN CONSENT.

MOODY'S CREDIT RATINGS, ASSESSMENTS, OTHER OPINIONS AND PUBLICATIONS ARE NOT INTENDED FOR USE BY ANY PERSON AS A BENCHMARK AS THAT TERM IS DEFINED FOR REGULATORY PURPOSES AND MUST NOT BE USED IN ANY WAY THAT COULD RESULT IN THEM BEING CONSIDERED A BENCHMARK.

All information contained herein is obtained by MOODY'S from sources believed by it to be accurate and reliable. Because of the possibility of human or mechanical error as well as other factors, however, all information contained herein is provided "AS IS" without warranty of any kind. MOODY'S adopts all necessary measures so that the information it uses in assigning a credit rating is of sufficient quality and from sources MOODY'S considers to be reliable including, when appropriate, independent third-party sources. However, MOODY'S is not an auditor and cannot in every instance independently verify or validate information received in the rating process or in preparing its Publications.

To the extent permitted by law, MOODY'S and its directors, officers, employees, agents, representatives, licensors and suppliers disclaim liability to any person or entity for any indirect, special, consequential, or incidental losses or damages whatsoever arising from or in connection with the information contained herein or the use of or inability to use any such information, even if MOODY'S or any of its directors, officers, employees, agents, representatives, licensors or suppliers is advised in advance of the possibility of such losses or damages, including but not limited to: (a) any loss of present or prospective profits or (b) any loss or damage arising where the relevant financial instrument is not the subject of a particular credit rating assigned by MOODY'S.

To the extent permitted by law, MOODY'S and its directors, officers, employees, agents, representatives, licensors and suppliers disclaim liability for any direct or compensatory losses or damages caused to any person or entity, including but not limited to by any negligence (but excluding fraud, willful misconduct or any other type of liability that, for the avoidance of doubt, by law cannot be excluded) on the part of, or any contingency within or beyond the control of, MOODY'S or any of its directors, officers, employees, agents, representatives, licensors or suppliers, arising from or in connection with the information contained herein or the use of or inability to use any such information.

NO WARRANTY, EXPRESS OR IMPLIED, AS TO THE ACCURACY, TIMELINESS, COMPLETENESS, MERCHANTABILITY OR FITNESS FOR ANY PARTICULAR PURPOSE OF ANY CREDIT RATING, ASSESSMENT, OTHER OPINION OR INFORMATION IS GIVEN OR MADE BY MOODY'S IN ANY FORM OR MANNER WHATSOEVER.

Moody's Investors Service, Inc., a wholly-owned credit rating agency subsidiary of Moody's Corporation ("MCO"), hereby discloses that most issuers of debt securities (including corporate and municipal bonds, debentures, notes and commercial paper) and preferred stock rated by Moody's Investors Service, Inc. have, prior to assignment of any credit rating, agreed to pay to Moody's Investors Service, Inc. for credit ratings opinions and services rendered by it fees ranging from \$1,000 to approximately \$5,000,000. MCO and Moody's Investors Service also maintain policies and procedures to address the independence of Moody's Investors Service credit ratings and credit rating processes. Information regarding certain affiliations that may exist between directors of MCO and rated entities, and between entities who hold credit ratings from Moody's Investors Service and have also publicly reported to the SEC an ownership interest in MCO of more than 5%, is posted annually at www.moody.com under the heading "Investor Relations — Corporate Governance — Director and Shareholder Affiliation Policy."

Additional terms for Australia only: Any publication into Australia of this document is pursuant to the Australian Financial Services License of MOODY'S affiliate, Moody's Investors Service Pty Limited ABN 61 003 399 657 AFSL 336969 and/or Moody's Analytics Australia Pty Ltd ABN 94 105 136 972 AFSL 383569 (as applicable). This document is intended to be provided only to "wholesale clients" within the meaning of section 761G of the Corporations Act 2001. By continuing to access this document from within Australia, you represent to MOODY'S that you are, or are accessing the document as a representative of, a "wholesale client" and that neither you nor the entity you represent will directly or indirectly disseminate this document or its contents to "retail clients" within the meaning of section 761G of the Corporations Act 2001. MOODY'S credit rating is an opinion as to the creditworthiness of a debt obligation of the issuer, not on the equity securities of the issuer or any form of security that is available to retail investors.

Additional terms for Japan only: Moody's Japan K.K. ("MJKK") is a wholly-owned credit rating agency subsidiary of Moody's Group Japan G.K., which is wholly-owned by Moody's Overseas Holdings Inc., a wholly-owned subsidiary of MCO. Moody's SF Japan K.K. ("MSFJ") is a wholly-owned credit rating agency subsidiary of MJKK. MSFJ is not a Nationally Recognized Statistical Rating Organization ("NRSRO"). Therefore, credit ratings assigned by MSFJ are Non-NRSRO Credit Ratings. Non-NRSRO Credit Ratings are assigned by an entity that is not a NRSRO and, consequently, the rated obligation will not qualify for certain types of treatment under U.S. laws. MJKK and MSFJ are credit rating agencies registered with the Japan Financial Services Agency and their registration numbers are FSA Commissioner (Ratings) No. 2 and 3 respectively.

MJKK or MSFJ (as applicable) hereby disclose that most issuers of debt securities (including corporate and municipal bonds, debentures, notes and commercial paper) and preferred stock rated by MJKK or MSFJ (as applicable) have, prior to assignment of any credit rating, agreed to pay to MJKK or MSFJ (as applicable) for credit ratings opinions and services rendered by it fees ranging from JPY125,000 to approximately JPY550,000,000.

MJKK and MSFJ also maintain policies and procedures to address Japanese regulatory requirements.

CLIENT SERVICES

Americas	1-212-553-1653
Asia Pacific	852-3551-3077
Japan	81-3-5408-4100
EMEA	44-20-7772-5454